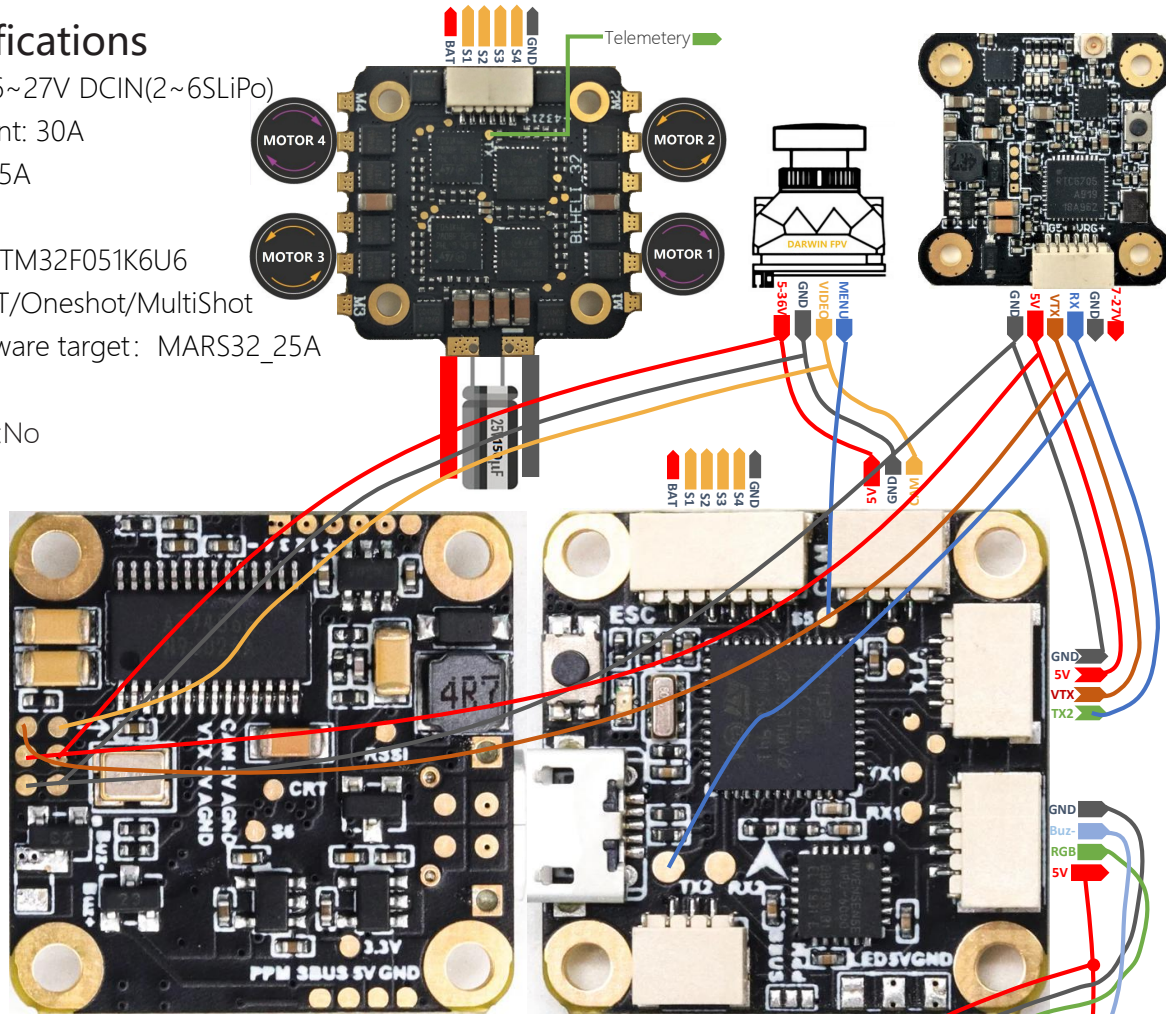


ESC Specifications

Input Voltage: 6~27V DCIN(2~6SLiPo)
 Constant Current: 30A
 Peak Current: 35A
 BEC Output: No
 MCU: 48MHz STM32F051K6U6
 Protocol: DSHOT/Oneshot/MultiShot
 BLHeli_32 Firmware target: MARS32_25A
 Telemetry: Yes
 Current Sensor: No



FC Specifications

MCU: 100MHz STM32F411CEU6
 IMU: MPU6000(SPI)
 Baro: No
 Blackbox: No
 OSD: AT7456E
 2xUarts(1,2)
 Built in inverter for SBUS input (UART1-RX)
 2xSoftserial supported(S5,S6)
 1x SH1.0_6pin for 4in1 ESC Signal
 1x SH1.0_3pin for Receiver Unit
 1x SH1.0_3pin for Analog Camera Unit
 1x SH1.0_4pin for Analog VTX Unit
 1x SH1.0_4pin for BEEP&RGB Unit
 6~27V DCIN(2~6SLiPo)
 BEC: 5V 2A cont.(Max 2.5A)
 LDO3.3V: Max 200mA
 Battery Voltage Sensor: 1:10(Scale110)
 BetaFlight target: MATEKF411

